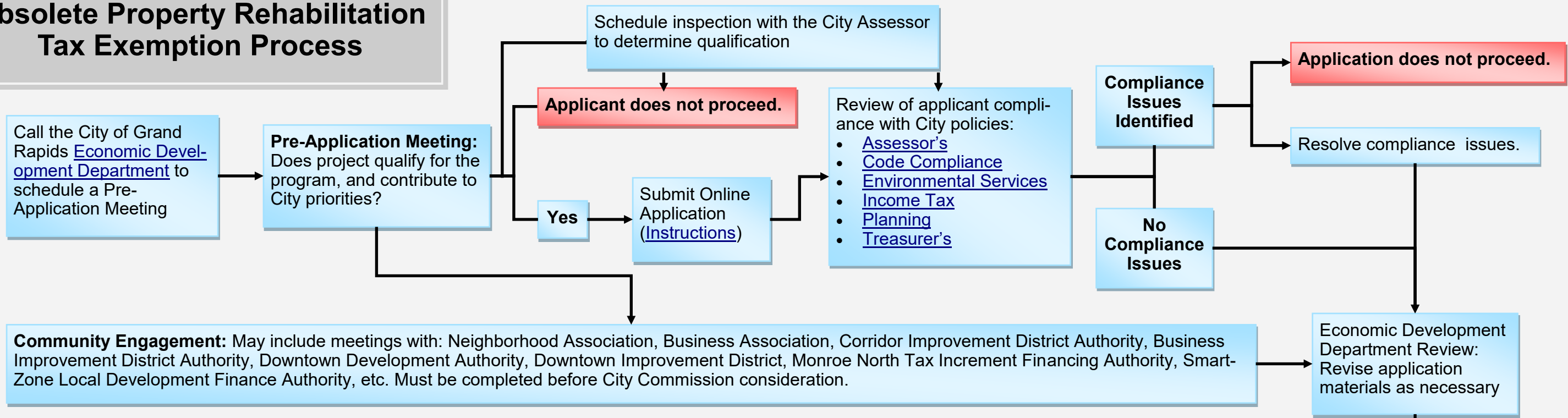
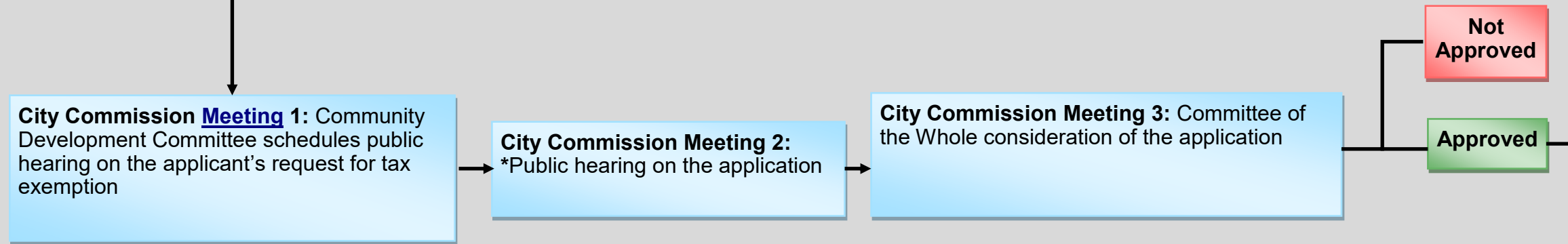


Obsolete Property Rehabilitation Tax Exemption Process

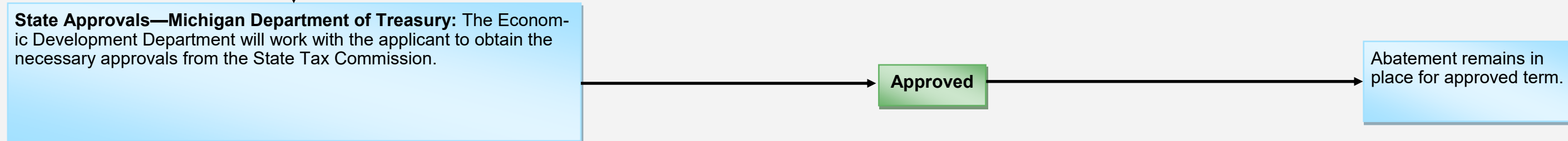
Timeframe: The community engagement and pre-approval process can take one to four (1-4) months depending on the project's location.



Timeframe: The local approval process takes approximately three months depending on meeting schedules.



Timeframe: The state approval and the post-approval process depends on the State Tax Commission meeting schedule.



* Applicant attendance is required.