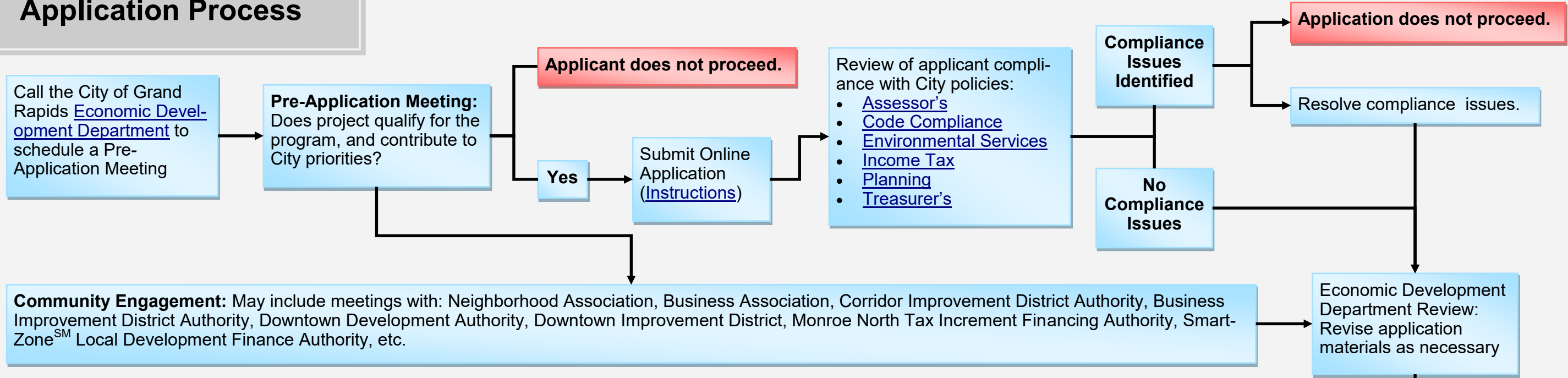
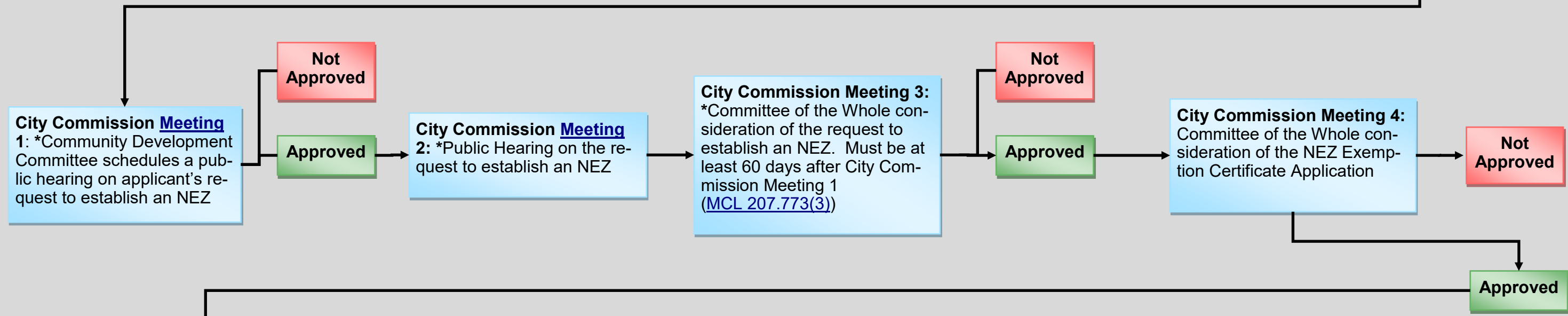


# Neighborhood Enterprise Zone Tax Exemption Application Process

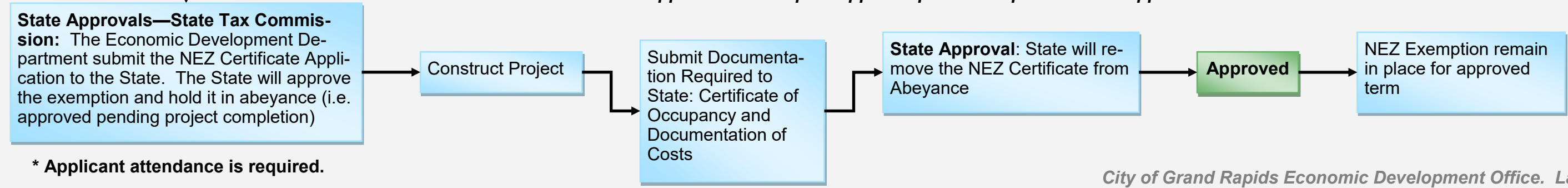
*Timeframe: The community engagement and pre-approval process can take one to four (1-4) months depending on the project's location.*



*Timeframe: The local approval process takes three to four (4-5) months depending on meeting schedules.*



*Timeframe: The state approval and the post-approval process depends on the applicant.*



\* Applicant attendance is required.